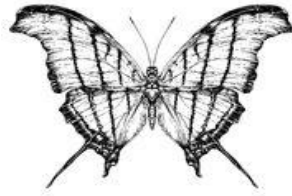


## Butterfly Plant List



This guide will help take you from egg to caterpillar to chrysalis to butterfly, so you can experience the inspirational life cycle of this beautiful creature in your own garden. For successful butterfly gardening, specific food plants must be present to feed the caterpillars and nectar plants to attract the adults. The little caterpillars may devour the host plant, but it's a worthwhile sacrifice that any genuine butterfly gardener should be willing to make. In most cases the plant will come back, or the avid butterfly steward will simply supply more of the favored plant. Following are plant suggestions often found here at The Natural Gardener:

To help guide you, keep in mind these basic principles when arranging your chosen plants. First, choose the sunniest location possible - sun produces the most and richest nectar, thus attracting the most butterflies for the longest periods during the day.

When installing the plants, place the tallest ones at the back of the bed, with the lower growing plants toward the front. Make sure there will be a sufficient source of water available-dying or sickly plants do not attract butterflies (installing soaker hoses are a great time saving idea). Cover the bed (including the hoses) with mulch.

A most important aspect of attracting butterflies is to *plant in masses of one plant species and of the same color* rather than one of this species and one of that. To assure an extended butterfly season, have a selection of spring, summer and fall blooming plants.

If desired, the less attractive larval food plants may be tucked in among the more showy species or placed in less noticeable areas of the garden. Being somewhat hidden often helps to keep the defenseless caterpillars safe from predators.

For further reading see references on opposite page.

Butterfly species listed feed on the plant as a caterpillar. Nectar plants will potentially attract a wide variety of butterfly species.

Trees		Nectar	Host	Butterfly Species
Apple	<i>Malus pumila</i>		x	Gray Hairstreak, Eastern Tiger Swallowtail, Red-spotted Purple, Spring/Summer Azure, Viceroy
Citrus	<i>Citrus spp.</i>	x	x	Giant Swallowtail
Escarpment Black Cherry *	<i>Prunus serotina var. eximia</i>	x	x	Eastern Tiger Swallowtail, Two-tailed Swallowtail, Viceroy, Spring/Summer Azure
Golden-ball Lead Tree *	<i>Leucaena retusa</i>	x		
Honey Mesquite *	<i>Prosopis glandulosa</i>	x	x	Ceraunus Blue, Marine Blue, Reakirt's Blue
Mex. Anacacho Orchid Tree	<i>Bauhinia mexicana</i>	x	x	Cassius Blue, Gold-spotted Aguna
Mexican Buckeye *	<i>Ungnadia speciosa</i>	x	x	Henry's Elfin
Mexican Plum *	<i>Prunus mexicana</i>	x	x	Spring/Summer Azure, Viceroy
Peach	<i>Prunus persica</i>		x	Eastern Tiger Swallowtail
Pear	<i>Pyrus communis</i>		x	Mourning Cloak, Red-spotted Purple, Viceroy
Texas Persimmon *	<i>Diospyros texana</i>		x	Gray Hairstreak, Henry's Elfin
Texas Redbud *	<i>Cercis canadensis var texensis</i>	x	x	Henry's Elfin
Western Soapberry *	<i>Sapindus saponaria</i>		x	Soapberry Hairstreak
Shrubs		Nectar	Host	Butterfly Species
Agarita *	<i>Mahonia trifoliolata</i>	x		
Barbados Cherry *	<i>Malpighia glabra</i>		x	Cassius Blue, Funereal Duskywing
Bee Brush *	<i>Aloysia gratissima</i>	x		
Butterfly Bush	<i>Buddleja davidii</i>	x		
Buttonbush *	<i>Cephalanthus occidentalis</i>	x		
Cenizo *	<i>Luecophyllum frutescens</i>		x	Theona Checkerspot
Duranta	<i>Duranta erecta</i>	x		
Elbow Bush *	<i>Foresteria pubescens</i>	x		
Fragrant Mimosa	<i>Mimosa borealis</i>	x		
Glossy Abelia	<i>Abelia x grandiflora</i>	x		
Rusty Blackhaw	<i>Viburnum rufidulum</i>	x		
Senna, Candlestick	<i>Senna alata</i>		x	Cloudless Sulphur, Gray Hairstreak, Orange-barred Sulphur
Senna, Flowering	<i>Senna corymbosa</i>		x	Cloudless Sulphur, Orange-barred Sulphur, Sleepy orange
Shrubby Boneset *	<i>Ageratina havanensis</i>	x	x	Bordered Patch, Rawson's Metalmark
Sweet Almond Verbena	<i>Aloysia virgata</i>	x		
Sumac *	<i>Rhus virens, R. Lanceolata</i>		x	Dusky Blue Hairstreak, Red-banded Hairstreak
Texas Kidneywood *	<i>Eysenhardtia texana</i>	x	x	Southern Dogface, Silver-spotted Skipper

Vines		Nectar	Host	Butterfly Species
American Wisteria *	<i>Wisteria frutescens</i>		x	Proteus Longtail, Silver-spotted Skipper, Zarucco Duskywing
Coral Honeysuckle *	<i>Lonicera sempervirens</i>		x	Spring/Summer Azure
Mexican Flame Vine	<i>Pseudogynoxys chenopodioides</i>	x		
Passionflower, Blue	<i>Passiflora caerulea</i>		x	Gulf Fritillary, Julia Longwing, Variegated Fritillary
Passionflower, Incense	<i>Passiflora "Incense"</i>		x	Gulf Fritillary, Julia Longwing, Variegated Fritillary
Passionflower, May Pop *	<i>Passiflora incarnata</i>		x	Gulf Fritillary, Julia Longwing, Variegated Fritillary, Zebra Longwing
Queen's Wreath	<i>Antigonon leptopus</i>	x		
Perennials/ Annuals		Nectar	Host	Butterfly Species
Alyssum, Sweet	<i>Lobularia maritima</i>	x	x	Checkered White, Cabbage White
Aster, Heath *	<i>Symphotrichum ericoides</i>	x	x	Pearl Crescent
Aster, Fall *	<i>Symphotrichum oblongifolium</i>	x		
Basil (African Blue, Holy)	<i>Oncimum spp.</i>	x		
Bee Balm	<i>Monarda didyma</i>	x		
Dill	<i>Anethum graveolens</i>		x	Black Swallowtail
Fennel	<i>Foeniculum vulgare</i>		x	Black Swallowtail
Flame Acanthus *	<i>Anisicanthus quadrifidus</i>		x	Elada Checkerspot, Janais Patch, Texan Crescent
Marigold	<i>Tagetes patula</i>	x		
Frogfruit *	<i>Phyla nodiflora</i>	x	x	Common Buckeye, Lantana Scrub-Hairsteak, Phaon Crescent, White Peacock
Mexican Honeysuckle	<i>Justicia spicigera</i>	x	x	Elada Checkerspot, Texan Crescent
Milkweed, Antelope Horn *	<i>Asclepias asperula</i>	x	x	Monarch, Queen
Milkweed, Butterfly Weed *	<i>Asclepias tuberosa</i>	x	x	Monarch, Queen
Milkweed, Green-flowered *	<i>Asclepias viridiflora</i>	x	x	Monarch, Queen
Milkweed, Showy *	<i>Asclepias speciosa</i>	x	x	Monarch, Queen
Milkweed, Swamp *	<i>Asclepias incarnata</i>	x	x	Monarch, Queen
Milkweed, Tropical	<i>Asclepias curassavica</i>	x	x	Monarch, Queen, Solider
Mistflower, Gregg's *	<i>Conoclinium dissectum</i>	x	x	Rawson's Metalmark, Rounded Metalmark
Nasturtium	<i>Trapaeloum majus</i>		x	Cabbage White, Great Southern White
Pansy, Garden	<i>Viola x wittrochlana</i>		x	Variegated Fritillary
Penta	<i>Pentas lanceolata</i>	x		
Petunia, Old Fashioned	<i>Petunia axillaris</i>	x		
Phlox, Summer	<i>Phlox paniculata</i>	x		
Pipevine, Fringed	<i>Aristolochia fimbriata</i>		x	Pipevine Swallowtail, Polydamas Swallowtail
Plateau Goldeneye	<i>Viguiera dentata</i>	x	x	Bordered Patch, Cassius Blue
Purple Coneflower *	<i>Echinaceae purpurea</i>	x		
Purple Globe Amaranth	<i>Gomphrena globosa</i>	x		
Rue	<i>Ruta chalapensis, R. graveolens</i>		x	Black Swallowtail, Giant Swallowtail
Senna, Lindheimer's *	<i>Senna lindheimeriana</i>	x	x	Cloudless Sulphur, Orange-barred Sulphur, Orange Sulphur, Silver-spotted Skipper, Sleepy Orange
Shrimp Plant	<i>Justicia brandegeana</i>		x	Common Buckeye, Texan Crescent
Skeleton-leaf Goldeneye *	<i>Viguiera stenoloba</i>	x		
Sunflower, Annual *	<i>Helianthus annuus</i>	x	x	Bordered Patch, Gorgone Checkerspot
Sunflower, Maximilian	<i>Helianthus maximiliani</i>	x		
Sunflower, Mexican	<i>Tithonia rotundifolia</i>	x	x	Bordered Patch
Texas Blazing Star *	<i>Liatris mucronata</i>	x		
Texas Bluebonnet *	<i>Lupinus texensis</i>	x	x	Henry's Elfin, Little Yellow, Orange Sulphur
Texas Lantana *	<i>Lantana urticoides</i>	x	x	Gray Hairstreak, Painted Lady, Lantana Scrub Hairstreak
Turk's Cap *	<i>Malvaviscus arborea</i>	x	x	Mallow Scrub-hairstreak
Verbena, Argentinian	<i>Verbena Bonariensis</i>	x		
Verbena, Prairie *	<i>Glandularia bipinnatifida</i>	x		
Violet, Missouri *	<i>Viola missouriensis</i>		x	Variegated Fritillary
Yucca, Twist-leaf *	<i>Yucca rupicola</i>		x	Strecker's Giant-Skipper, Yucca Giant-Skipper
Zexmenia *	<i>Wedelia texana</i>	x	x	Bordered Patch, Lacinia Patch, Sierran Metalmark
Zinnia	<i>Zinnia angustifolia</i>	x		

\* Plants Native to Texas

<sup>1</sup> Ajilvsgi, Geyata. *Butterfly Gardening for Texas*. College Station. Texas A & M University Press, 2013

<sup>2</sup> Allen, Thomas J., Jim P. Brock, Jeffrey Glassberg. *Caterpillars in the Field and Garden*. New York: Oxford University Press, 2005

<sup>3</sup> Brock, Jim P. & Kenn Kaufman. *Field Guide to Butterflies of North America*. New York: Houghton Mifflin Company, 2003

<sup>4</sup> Clark, Dale. *Dallas Butterflies*. Self-published listing