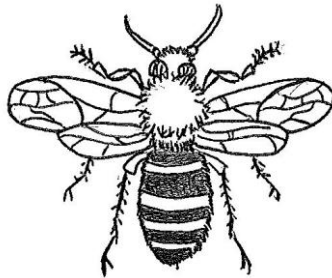


**ATTRACTING BEES**  
*Native and Honey Bee Plants*



- \* To attract bees throughout the season you will need plants that provide both pollen and nectar. Choose plants with staggered bloom times to ensure a consistent food source throughout the year. Provide consistent fresh water source (a bird bath with rocks or pebbles for landing pads).
- \* Plant in clumps of multiple individuals of a single species. Creating pockets of different species like this throughout your landscape creates a larger cache of nutrients and makes it more worth the trip to your garden at any given time.
- \* Leave a small area of exposed undisturbed soil for ground nesting bees, and some debris around for nesting materials and overwintering sites.
- \* Native bees like Bumble bees and other solitary bees are responsible for the pollination of 80% of all flowering plants.<sup>1</sup> Their role and importance in pollination is not to be underestimated. Your goal should be to attract all species of bee to your garden not just honey bees.
- \* **DO NOT USE any chemical pesticides** and avoid applying organic pesticides directly to flowers.
- \* Avoid hybrids or "doubles" and **choose native** plants whenever possible.
- \* Wildlife Tax exemptions are available for Native Pollinator Management. More information is available from the Texas Parks and Wildlife Department website [tpwd.texas.gov](http://tpwd.texas.gov).

HB = Honey Bee, BB = Bumble Bee, SB = Solitary Bee

Honey bees and Bumble bees are the only social bees in Texas. Basically all other bee species are solitary in habit.

\* Plants Native to Texas

Trees		Nectar	Pollen	HB	BB	SB	Bloom Time
Citrus	<i>Citrus spp.</i>	X		X			J F M A M J J A S O N D
Fruit Trees	Most fruit tree species	X	X	X			J F M A M J J A S O N D
Guajillo *	<i>Acacia berlandiera</i>	X	X	X			J F M A M J J A S O N D
Huisache *	<i>Acacia farnesiana</i>	X	X	X			J F M A M J J A S O N D
Loquat	<i>Eriobotrya japonica</i>	X	X	X			J F M A M J J A S O N D
Mesquite *	<i>Prosopis glandulosa</i>	X	X	X		X	J F M A M J J A S O N D
Mexican Plum *	<i>Prunus mexicana</i>	X	X	X		X	J F M A M J J A S O N D
Mt. Laurel *	<i>Sophora secundiflora</i>	X		X			J F M A M J J A S O N D
Texas Persimmon *	<i>Diospyros texana</i>	X	X	X		X	J F M A M J J A S O N D
Texas Red Bud *	<i>Cercis canadensis var. texensis</i>	X		X	X	X	J F M A M J J A S O N D

Shrubs		Nectar	Pollen	HB	BB	SB	Bloom Time
Agarita *	<i>Mahonia trifoliolata</i>	X		X			J F M A M J J A S O N D
Bottlebrush	<i>Callistemon spp.</i>	X		X			J F M A M J J A S O N D
Button Bush *	<i>Cephalanthus occidentalis</i>	X	X	X	X	X	J F M A M J J A S O N D
Cenizo *	<i>Leucophyllum frutescens</i>	X		X			J F M A M J J A S O N D
Elbow Bush *	<i>Forestiera pubescens</i>	X	X	X			J F M A M J J A S O N D
Fragrant Honeysuckle	<i>Lonicera fragrantissima</i>	X		X			J F M A M J J A S O N D
Roughleaf Dogwood *	<i>Cornus drummondii</i>	X	X	X		X	J F M A M J J A S O N D
Rusty Blackhaw *	<i>Viburnum rufidulum</i>	X	X	X		X	J F M A M J J A S O N D
Sumac *	<i>Rhus spp.</i>	X	X	X	X	X	J F M A M J J A S O N D
Texas Kidneywood *	<i>Eysenhardtia texana</i>	X		X		X	J F M A M J J A S O N D
Yaupon *	<i>Ilex vomitoria</i>	X	X	X			J F M A M J J A S O N D

Vines		Nectar	Pollen	HB	BB	SB	Bloom Time
Coral Honeysuckle *	<i>Lonicera sempervirens</i>	X			X		J F M A M J J A S O N D
Queen's Wreath	<i>Antigonon leptopus</i>	X	X	X			J F M A M J J A S O N D

Perennials/ Annuals		Nectar	Pollen	HB	BB	SB	Bloom Time											
American Basketflower *	<i>Centaurea americana</i>	X	X	X	X	X	J	F	M	A	M	J	J	A	S	O	N	D
Argentinian Verbena	<i>Verbena bonariensis</i>	X		X	X		J	F	M	A	M	J	J	A	S	O	N	D
Autumn Sage *	<i>Salvia gregii</i>	X		X			J	F	M	A	M	J	J	A	S	O	N	D
Basil (African Blue, Holy)	<i>Oncium spp.</i>	X	X	X			J	F	M	A	M	J	J	A	S	O	N	D
Bee Balm	<i>Monarda didyma</i>	X	X	X	X	X	J	F	M	A	M	J	J	A	S	O	N	D
Bee Brush *	<i>Aloysia gratissima</i>	X		X			J	F	M	A	M	J	J	A	S	O	N	D
Blackeyed Susan *	<i>Rudbeckia spp.</i>	X	X	X			J	F	M	A	M	J	J	A	S	O	N	D
Bluebeard	<i>Caryopteris spp.</i>	X		X			J	F	M	A	M	J	J	A	S	O	N	D
Bluebonnet *	<i>Lupinus texensis</i>	X		X	X		J	F	M	A	M	J	J	A	S	O	N	D
Borage	<i>Borago officinalis</i>	X	X	X	X		J	F	M	A	M	J	J	A	S	O	N	D
Brassicas	<i>Brassica spp.</i>	X	X	X	X		J	F	M	A	M	J	J	A	S	O	N	D
Buckwheat	<i>Fagopyrum esculentum</i>	X	X	X	X		J	F	M	A	M	J	J	A	S	O	N	D
California Poppy *	<i>Eschscholzia californica</i>	X	X	X	X	X	J	F	M	A	M	J	J	A	S	O	N	D
Catnip	<i>Nepeta cataria</i>	X	X	X	X		J	F	M	A	M	J	J	A	S	O	N	D
Crimson Clover	<i>Trifolium incarnatum</i>	X	X	X	X		J	F	M	A	M	J	J	A	S	O	N	D
Damianita *	<i>Chrysactinia mexicana</i>	X	X	X			J	F	M	A	M	J	J	A	S	O	N	D
Duranta	<i>Duranta erecta</i>	X		X	X		J	F	M	A	M	J	J	A	S	O	N	D
Eryngo *	<i>Eryngium leavenworthii</i>	X	X	X	X	X	J	F	M	A	M	J	J	A	S	O	N	D
Fall Aster *	<i>Symphyotrichum oblongifolium</i>	X	X	X		X	J	F	M	A	M	J	J	A	S	O	N	D
Flame Acanthus *	<i>Anisicanthus quardifidus</i>	X			X	X	J	F	M	A	M	J	J	A	S	O	N	D
Globemallow	<i>Sphaeralcea spp.</i>	X	X	X		X	J	F	M	A	M	J	J	A	S	O	N	D
Golden Rod *	<i>Solidago spp.</i>	X	X	X		X	J	F	M	A	M	J	J	A	S	O	N	D
Horsemint *	<i>Monarda citriodora</i>	X	X	X	X	X	J	F	M	A	M	J	J	A	S	O	N	D
Indigo Spires	<i>Salvia x "Indigo Spires"</i>	X	X	X	X		J	F	M	A	M	J	J	A	S	O	N	D
Lavender	<i>Lavendula angustifolia</i>	X	X	X	X		J	F	M	A	M	J	J	A	S	O	N	D
Larkspur	<i>Delphinium spp.</i>	X		X			J	F	M	A	M	J	J	A	S	O	N	D
Lemon Balm	<i>Melissa officinalis</i>	X	X	X			J	F	M	A	M	J	J	A	S	O	N	D
Meadow Sage	<i>Salvia nemorosa</i>	X		X	X		J	F	M	A	M	J	J	A	S	O	N	D
Mealy Blue Sage *	<i>Salvia farinacea</i>	X	X	X	X	X	J	F	M	A	M	J	J	A	S	O	N	D
Milkweed *	<i>Asclepias sp.</i>	X		X	X	X	J	F	M	A	M	J	J	A	S	O	N	D
Oregano	<i>Origanum vulgare</i>	X	X	X	X		J	F	M	A	M	J	J	A	S	O	N	D
Partridge Pea *	<i>Chamaecrista fasciculata</i>	X	X	X	X	X	J	F	M	A	M	J	J	A	S	O	N	D
Plateau Golden Eye *	<i>Vigueria denata</i>	X	X	X		X	J	F	M	A	M	J	J	A	S	O	N	D
Prarie Clover *	<i>Dalea spp.</i>	X	X	X	X		J	F	M	A	M	J	J	A	S	O	N	D
Purple Coneflower *	<i>Echinaceae purpurea</i>	X	X	X	X	X	J	F	M	A	M	J	J	A	S	O	N	D
Rosemary	<i>Rosmarinus officinalis</i>	X	X	X	X		J	F	M	A	M	J	J	A	S	O	N	D
Skeleton-leaf Goldeneye *	<i>Vigueria stenoloba</i>	X	X	X			J	F	M	A	M	J	J	A	S	O	N	D
Spiderwort *	<i>Tradescantia spp.</i>	X	X	X		X	J	F	M	A	M	J	J	A	S	O	N	D
Sunflower, Annual *	<i>Helianthus annuus</i>	X	X	X	X	X	J	F	M	A	M	J	J	A	S	O	N	D
Sunflower, Maximilian *	<i>Helianthus maximiliani</i>	X	X	X	X	X	J	F	M	A	M	J	J	A	S	O	N	D
Lanceleaf Coreopsis *	<i>Coreopsis lanceolata</i>	X	X	X		X	J	F	M	A	M	J	J	A	S	O	N	D
Texas Lantana *	<i>Lantana urticoides</i>	X	X	X	X	X	J	F	M	A	M	J	J	A	S	O	N	D
Tropical Sage *	<i>Salvia coccinea</i>	X		X			J	F	M	A	M	J	J	A	S	O	N	D
Wine Cup *	<i>Callirhoe involucrata</i>	X	X	X		X	J	F	M	A	M	J	J	A	S	O	N	D
Yarrow (white)	<i>Achillea millefolium</i>	X	X	X		X	J	F	M	A	M	J	J	A	S	O	N	D

<sup>1</sup> Moisset, Beatriz. Buchmann, Stephen. [Bee Basics: An Introduction to our Native Bees](#). USDA & U. S. Forest Service Pollinator Partnership 2011

<sup>2</sup> Williams, Paul. Thorp, Robbin. Richardson, Leif. Colla, Shelia. [Bumble Bees of North America: An Identification Guide](#) Princeton University Press 2014

<sup>3</sup> Mader, Eric. Shepherd, Matthew. Vaughan, Mace. Black, Scott Hoffman. LeBuhn, Gretchen. [The Xerces Society Guide. Attracting Native Pollinators: Protecting North America's Bees and Butterflies](#). Storey Publishing 2011.

<sup>4</sup> Ladybird Johnson Wildflower Center University of Texas at Austin. Native Plant Information Network species profiles 1.31.2017 [www.wildflower.org/plants/](http://www.wildflower.org/plants/)  
Artwork by Angelica Padron